



SOURCE: Source: SANGIS 2017

**FIGURE 14ba**

Impacts to Vegetation Communities and Landcovers

Campo Wind with Boulder Brush Facilities Biological Technical Report

**DUDEK**

0 200 400 Feet













SOURCE: Source: SANGIS 2017

**FIGURE 14bd**

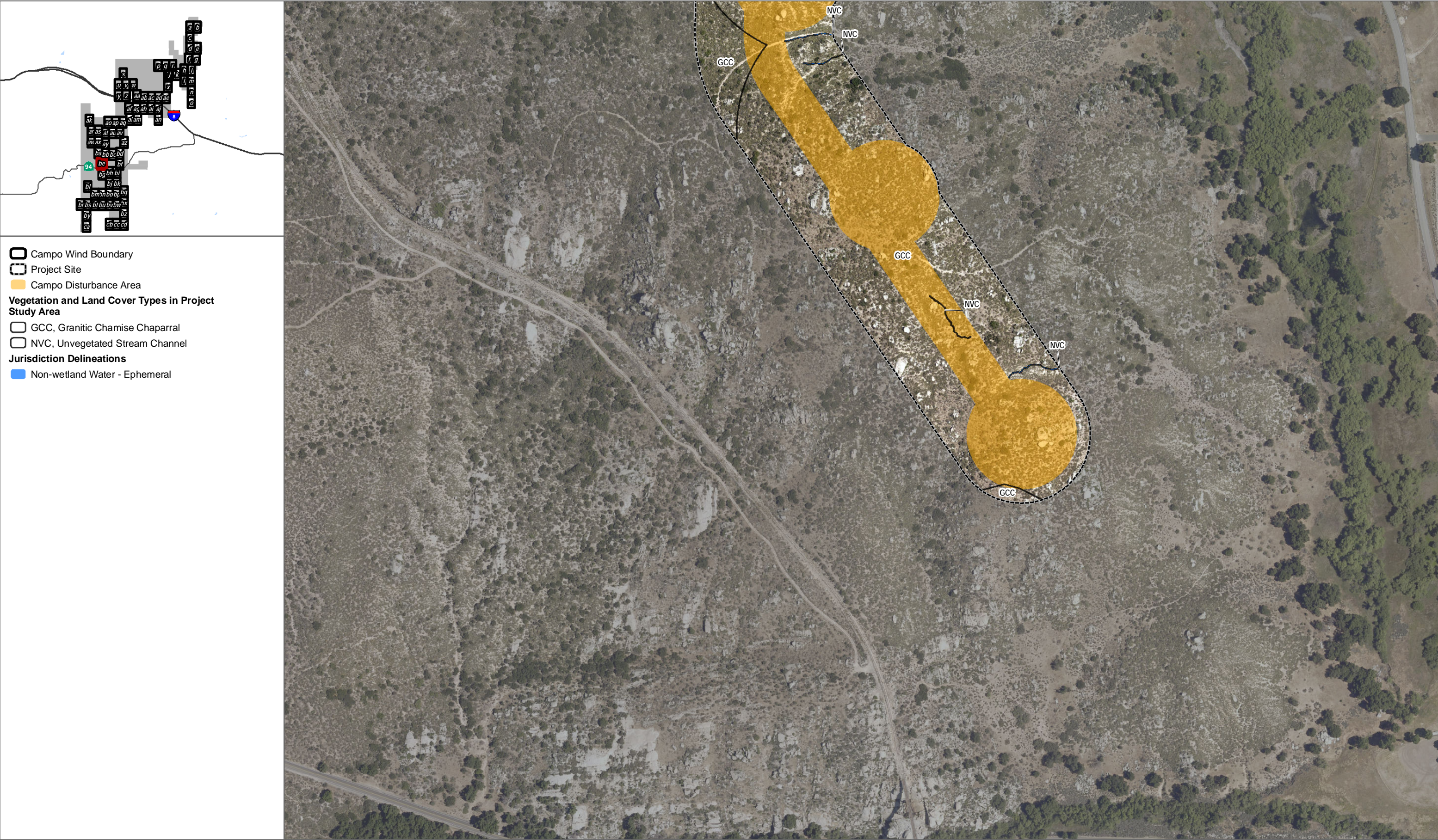
Impacts to Vegetation Communities and Landcovers

Campo Wind with Boulder Brush Facilities Biological Technical Report

**DUDEK**

0 200 400 Feet



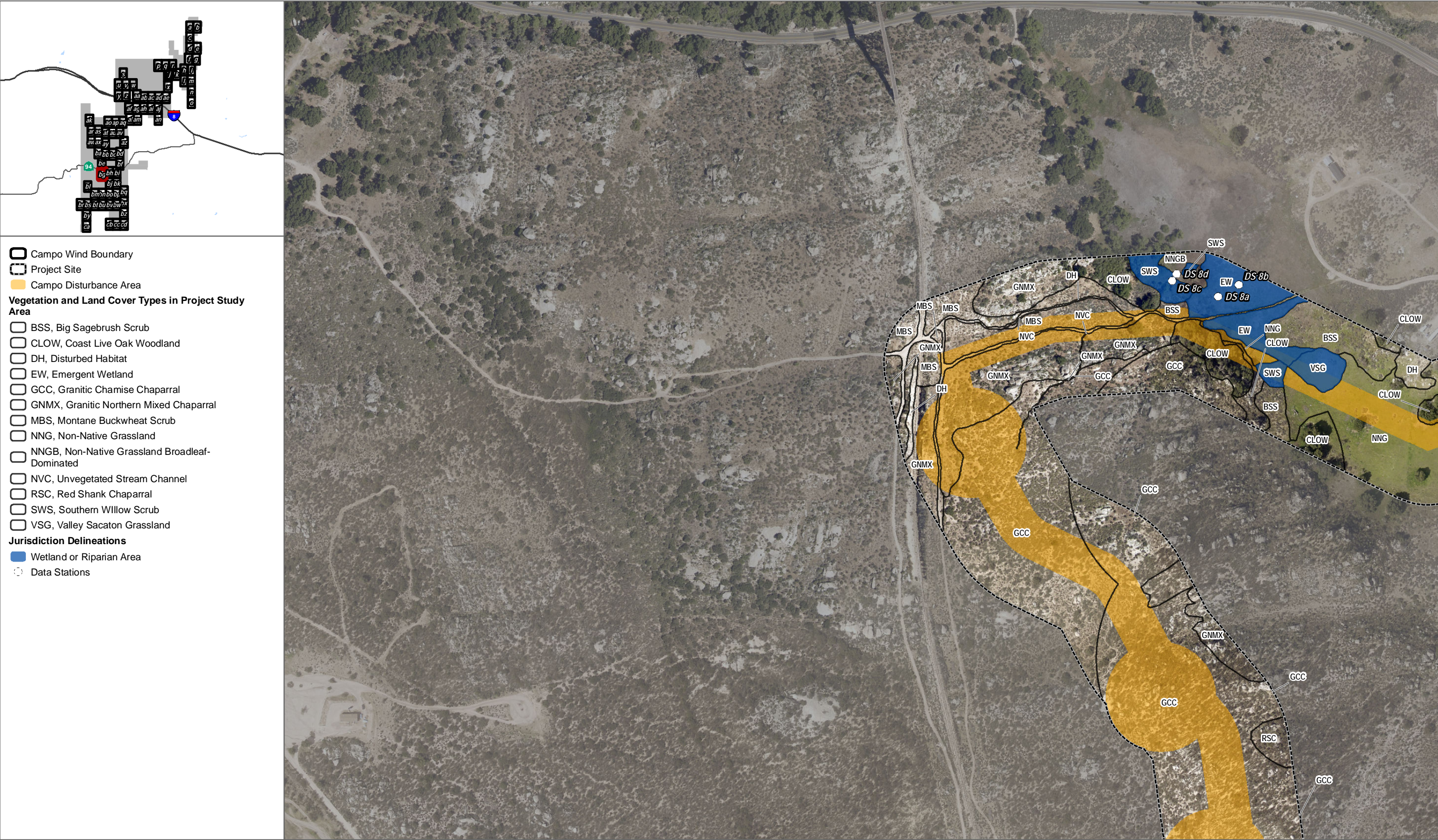


SOURCE: Source: SANGIS 2017









SOURCE: Source: SANGIS 2017

**FIGURE 14bg**

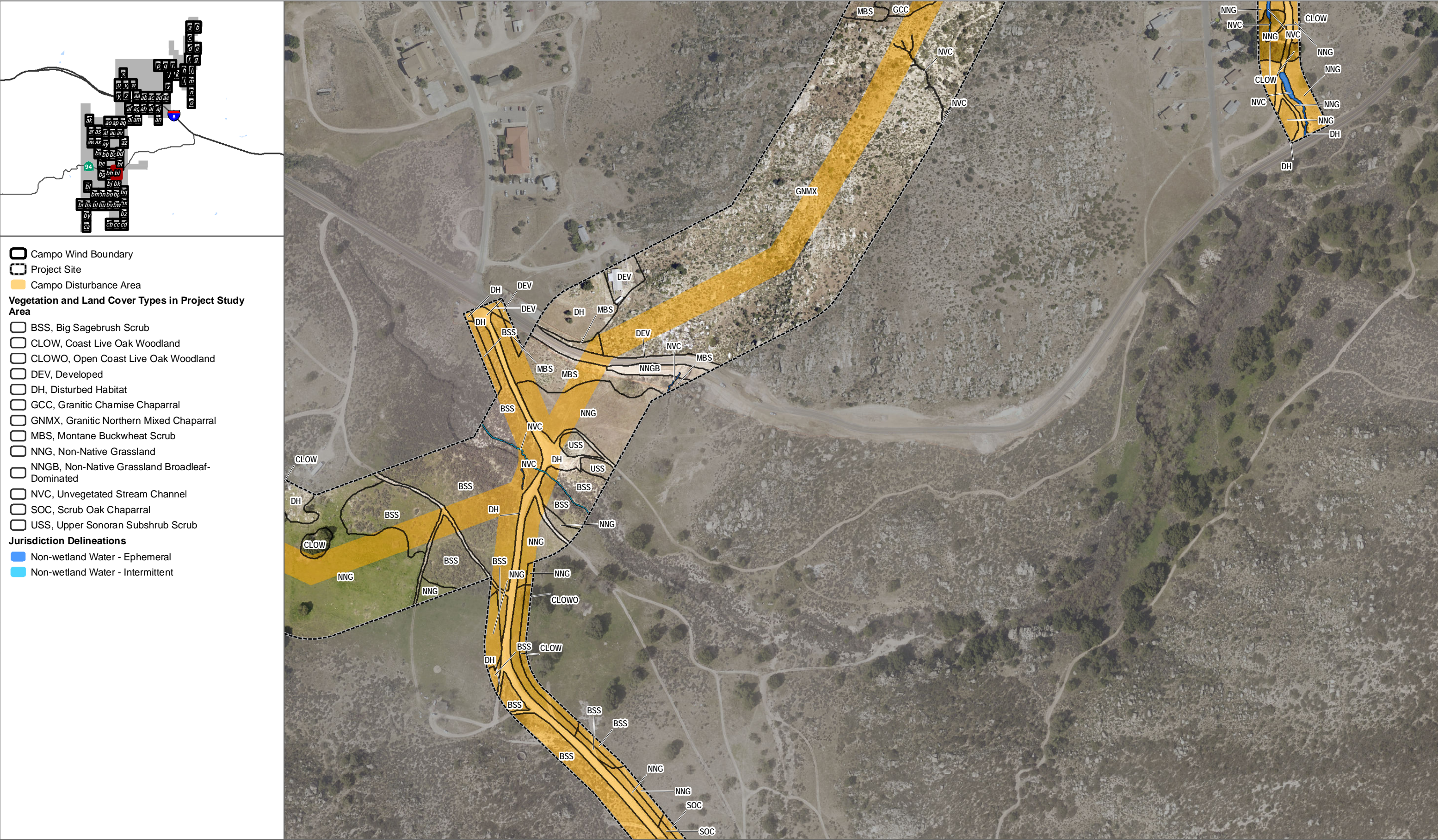
Impacts to Vegetation Communities and Landcovers

Campo Wind with Boulder Brush Facilities Biological Technical Report









SOURCE: Source: SANGIS 2017

**DUDEK**

0 200 400 Feet

**FIGURE 14bi**

**Impacts to Vegetation Communities and Landcovers**

Campo Wind with Boulder Brush Facilities Biological Technical Report





SOURCE: Source: SANGIS 2017

**FIGURE 14bj**  
Impacts to Vegetation Communities and Landcovers  
Campo Wind with Boulder Brush Facilities Biological Technical Report





SOURCE: Source: SANGIS 2017

**FIGURE 14bk**  
Impacts to Vegetation Communities and Landcovers  
Campo Wind with Boulder Brush Facilities Biological Technical Report





SOURCE: Source: SANGIS 2017

**DUDEK**

0 200 400 Feet

**FIGURE 14bI**

Impacts to Vegetation Communities and Landcovers

Campo Wind with Boulder Brush Facilities Biological Technical Report





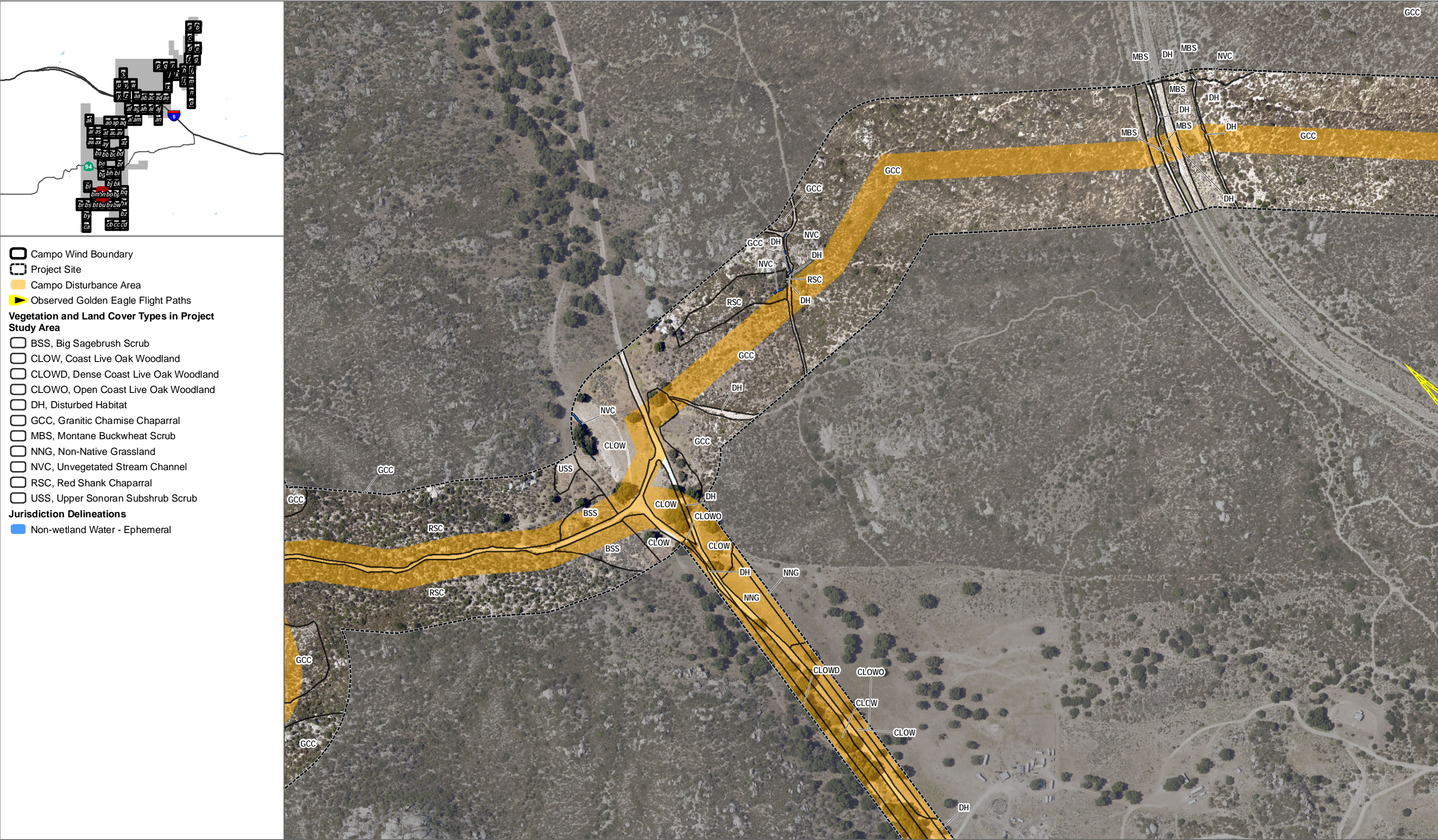
SOURCE: Source: SANGIS 2017

**FIGURE 14bm**

Impacts to Vegetation Communities and Landcovers

Campo Wind with Boulder Brush Facilities Biological Technical Report

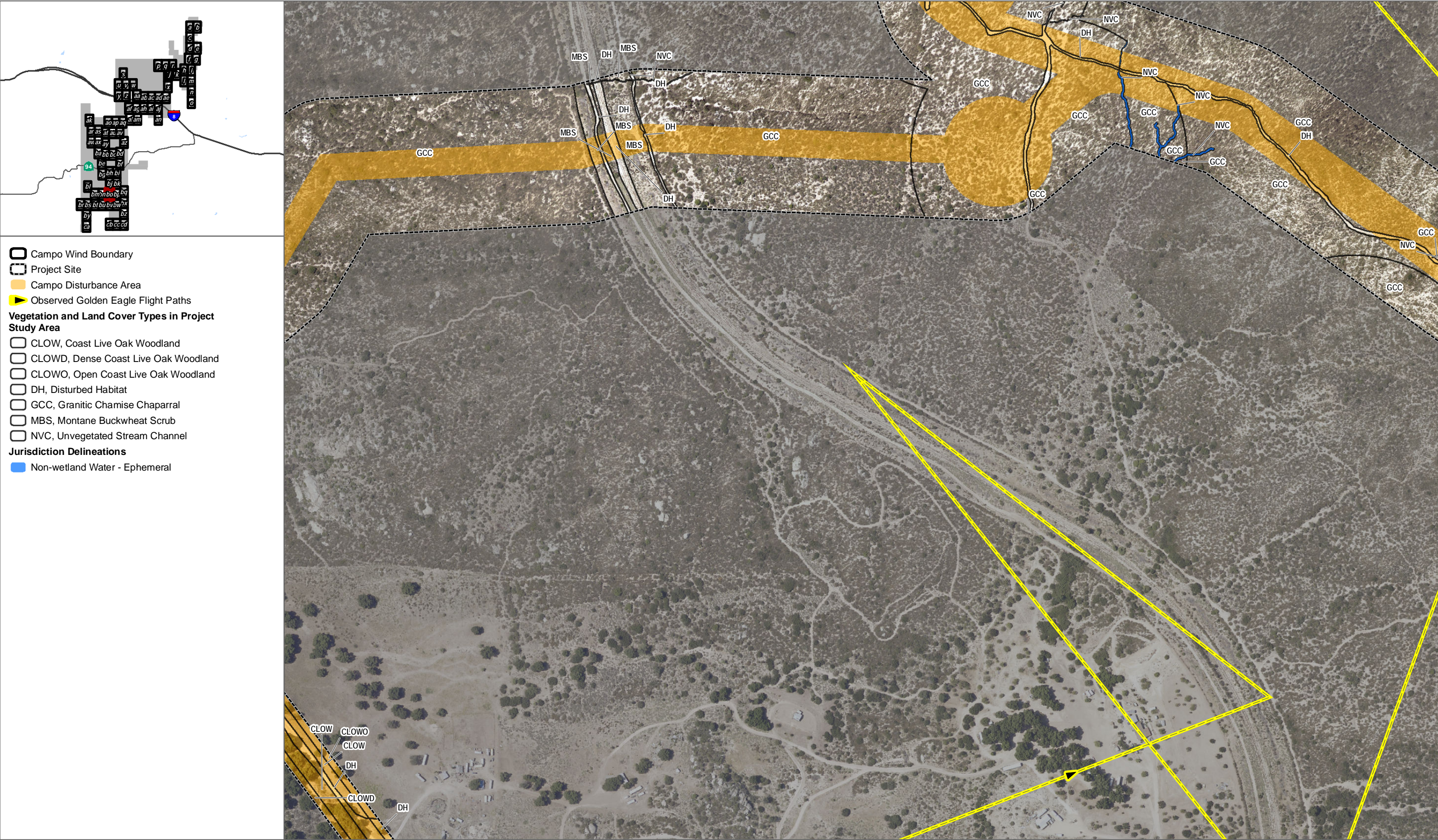




SOURCE: Source: SANGIS 2017

**FIGURE 14bn**  
Impacts to Vegetation Communities and Landcovers  
Campo Wind with Boulder Brush Facilities Biological Technical Report





SOURCE: Source: SANGIS 2017

DUDEK

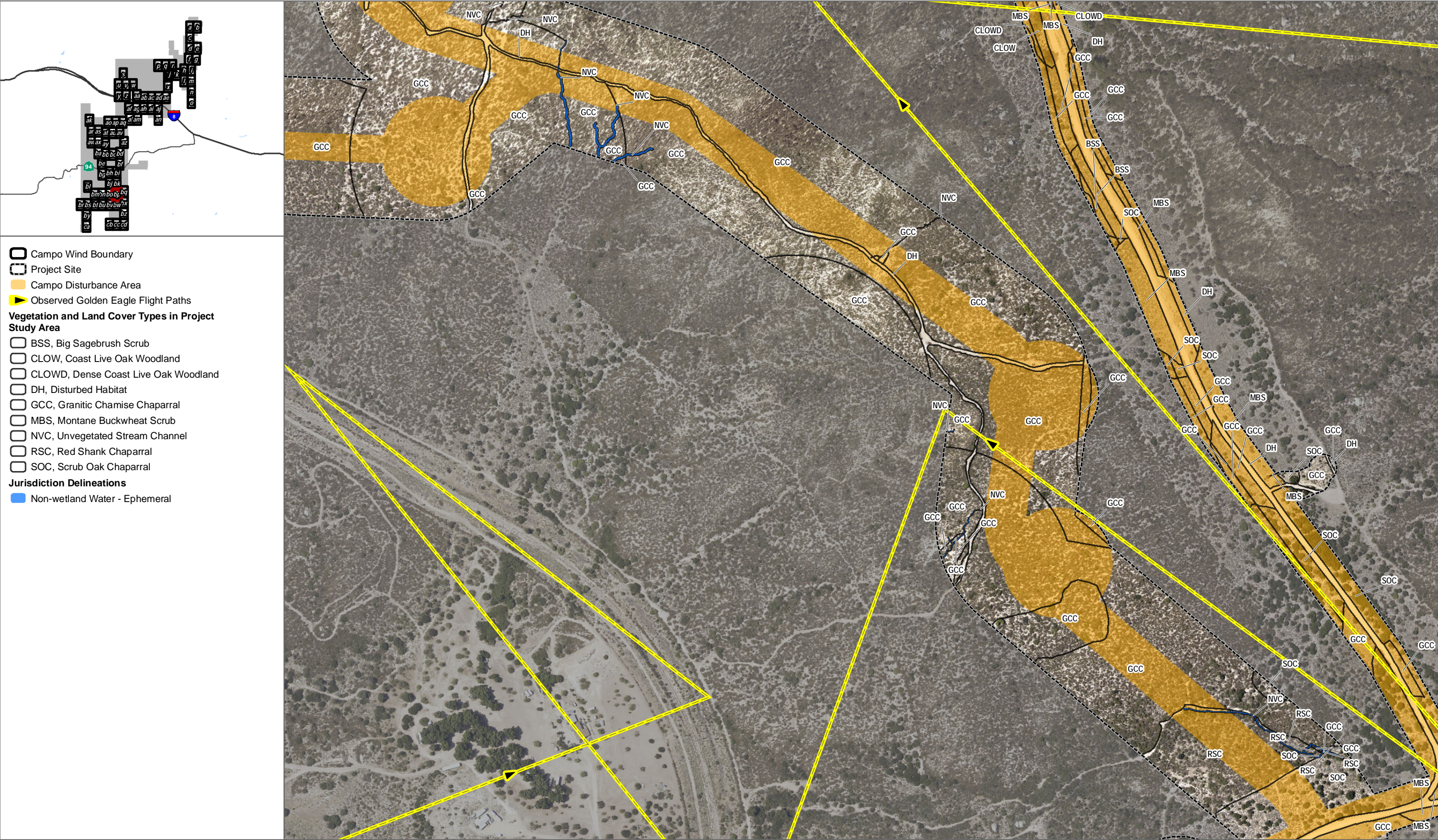
0 200 400 Feet

FIGURE 14bo

Impacts to Vegetation Communities and Landcovers

Campo Wind with Boulder Brush Facilities Biological Technical Report









SOURCE: Source: SANGIS 2017

**FIGURE 14bq**  
Impacts to Vegetation Communities and Landcovers  
Campo Wind with Boulder Brush Facilities Biological Technical Report





SOURCE: Source: SANGIS 2017

**FIGURE 14br**

Impacts to Vegetation Communities and Landcovers

Campo Wind with Boulder Brush Facilities Biological Technical Report





SOURCE: Source: SANGIS 2017

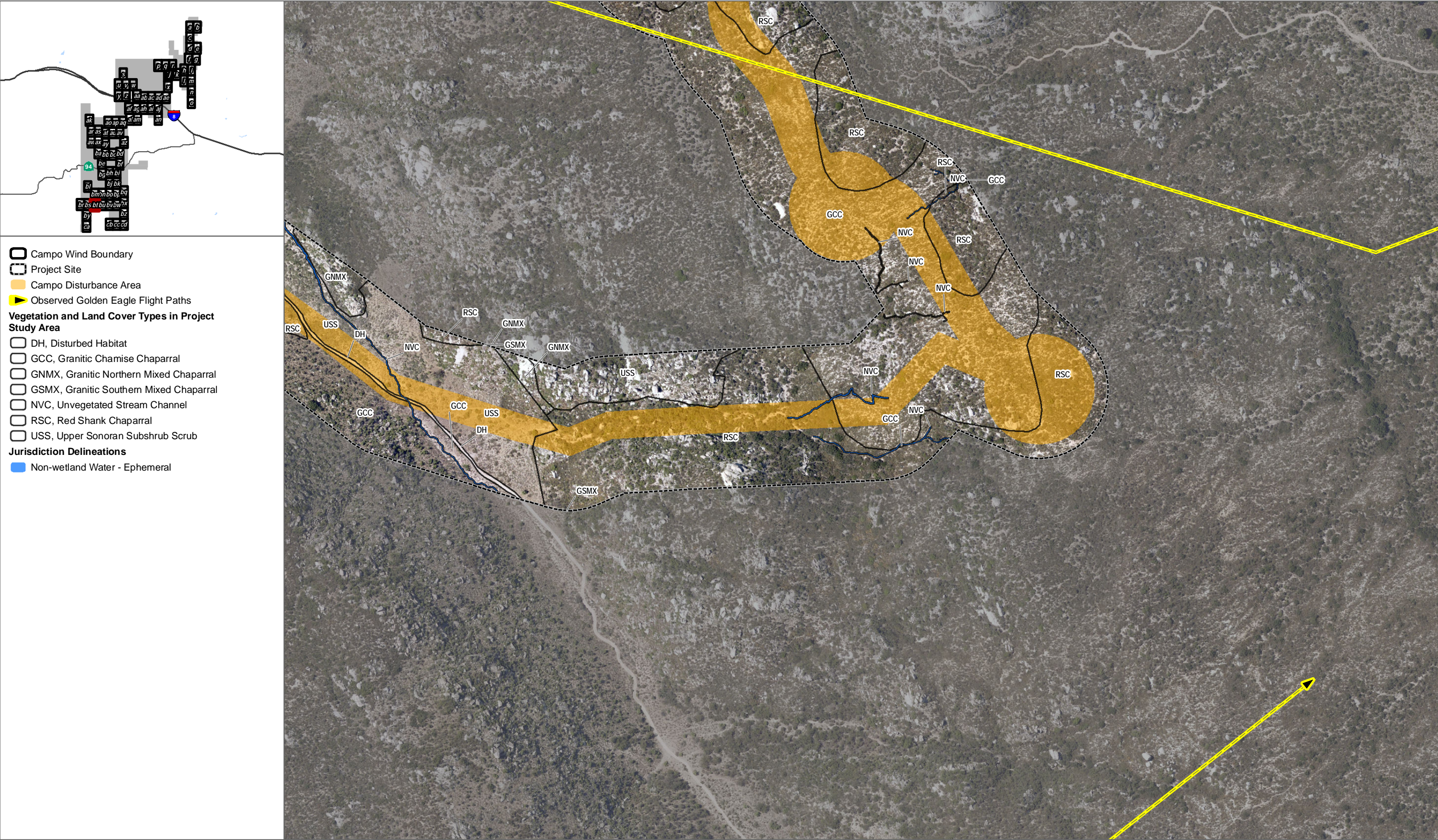
**FIGURE 14bs**

Impacts to Vegetation Communities and Landcovers

Campo Wind with Boulder Brush Facilities Biological Technical Report

**DUDEK** 0 200 400 Feet





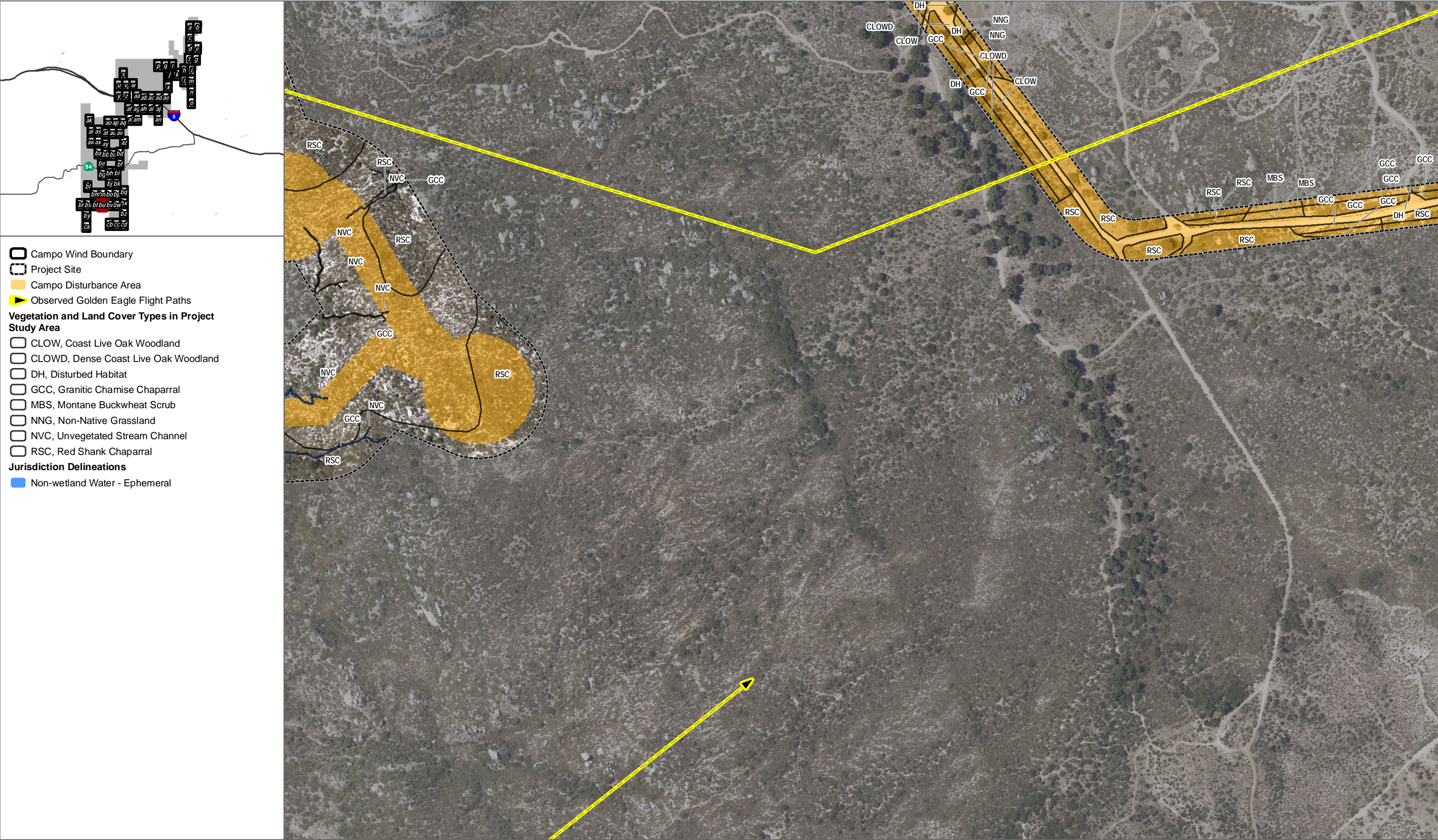
SOURCE: Source: SANGIS 2017

**FIGURE 14bt**

Impacts to Vegetation Communities and Landcovers

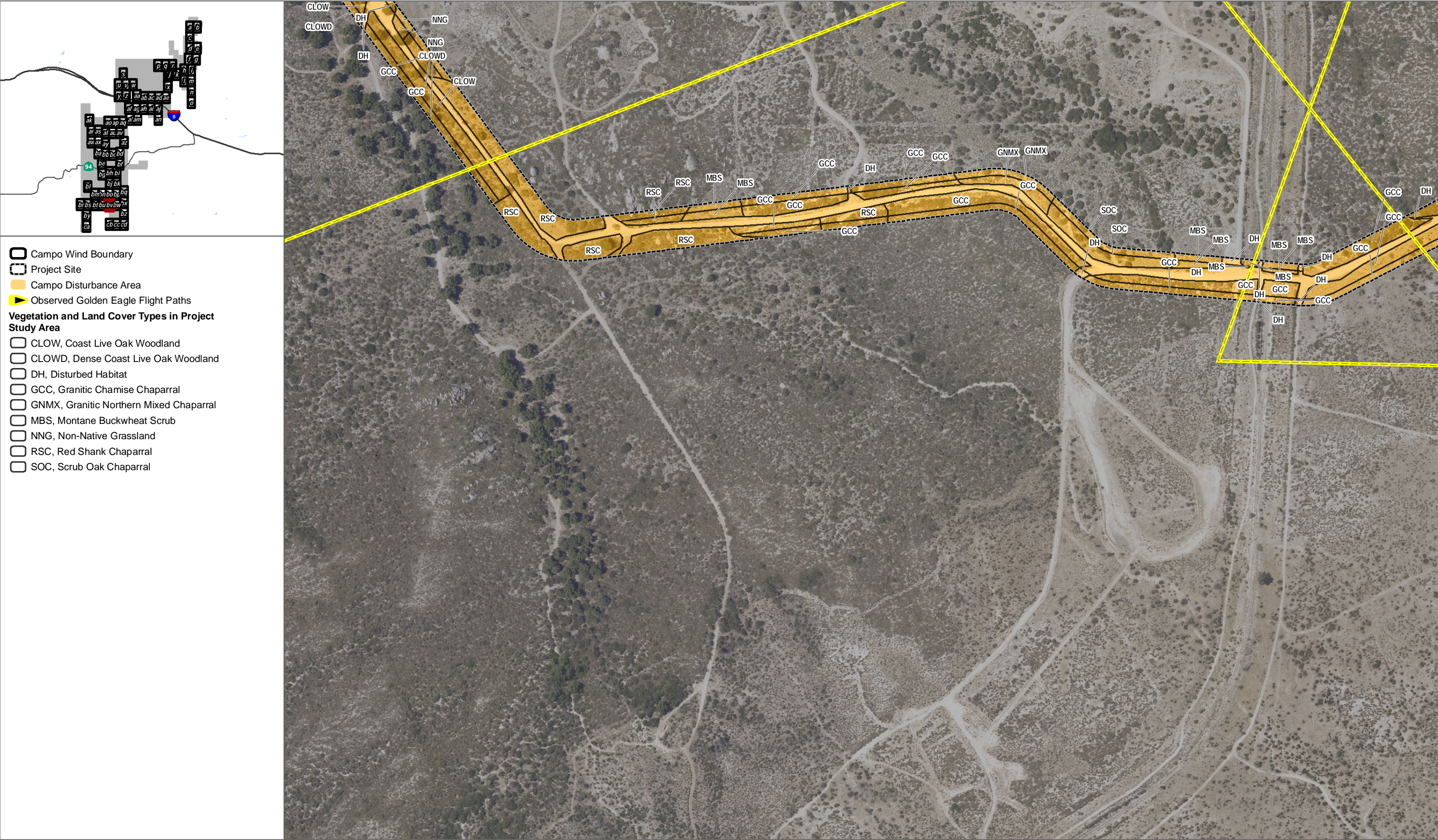
Campo Wind with Boulder Brush Facilities Biological Technical Report





SOURCE: Source: SANGIS 2017





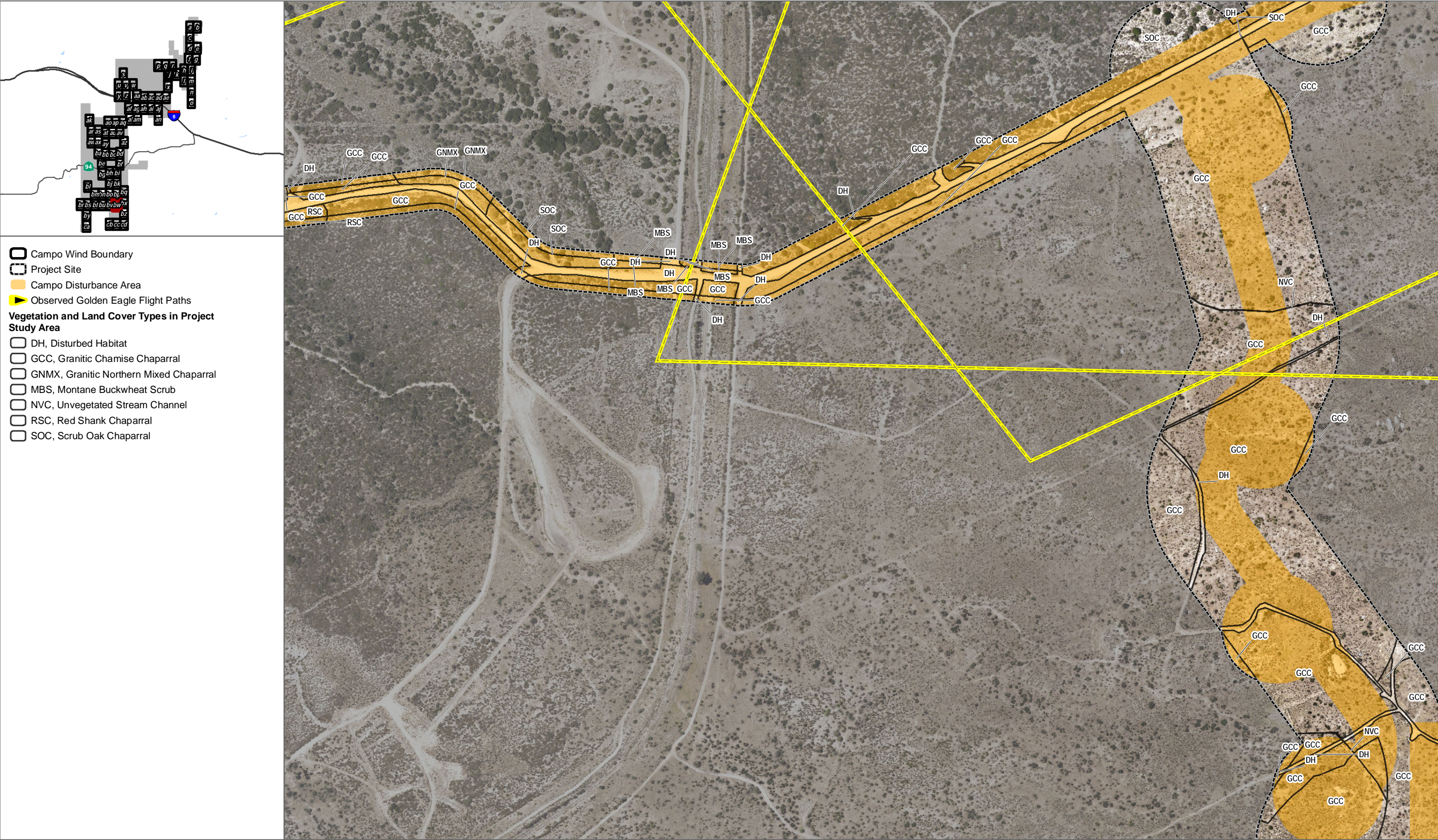
SOURCE: Source: SANGIS 2017

**FIGURE 14bv**

Impacts to Vegetation Communities and Landcovers

Campo Wind with Boulder Brush Facilities Biological Technical Report

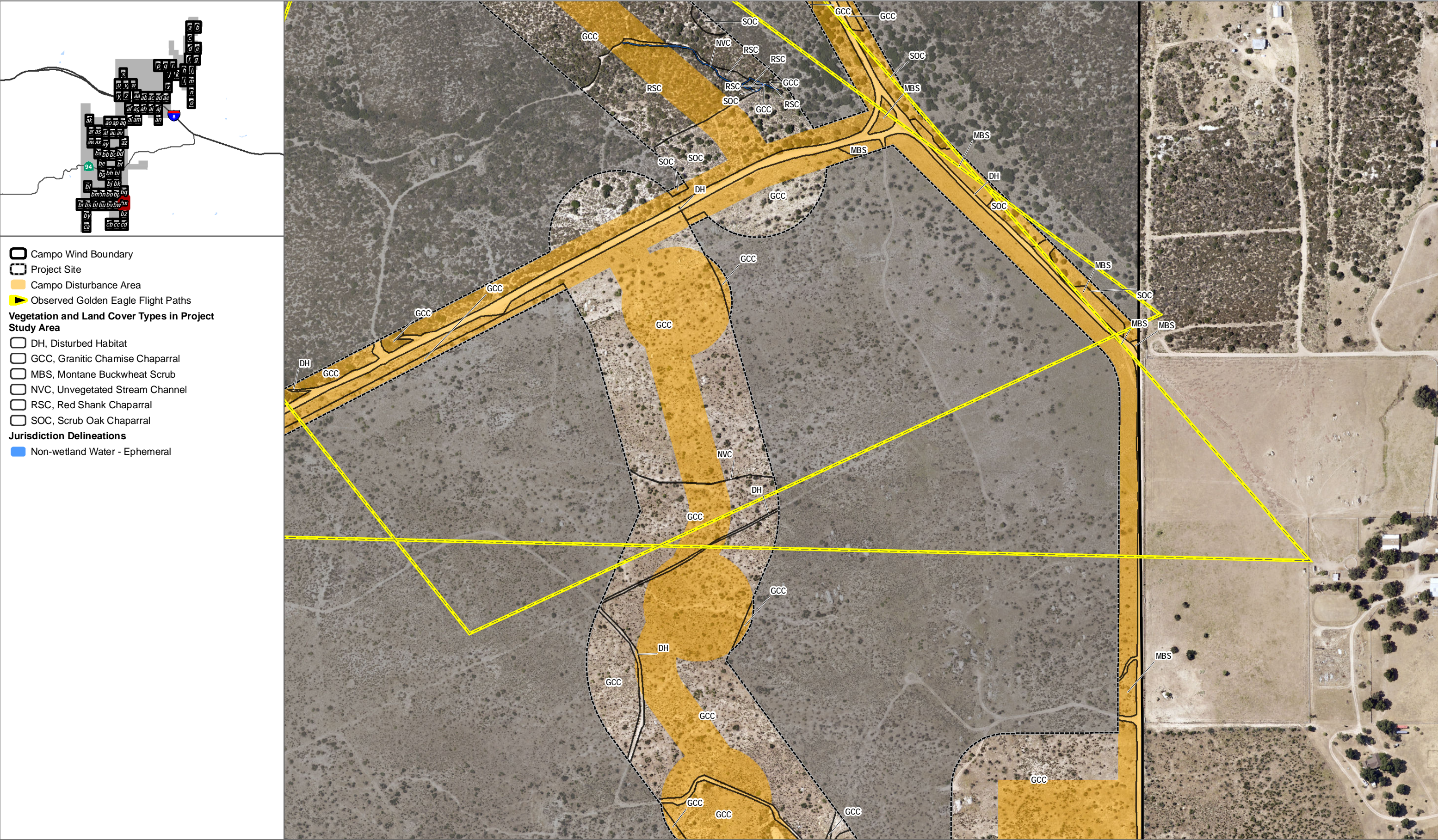




SOURCE: Source: SANGIS 2017

**FIGURE 14bw**  
Impacts to Vegetation Communities and Landcovers  
Campo Wind with Boulder Brush Facilities Biological Technical Report









SOURCE: Source: SANGIS 2017





SOURCE: Source: SANGIS 2017

**FIGURE 14bz**

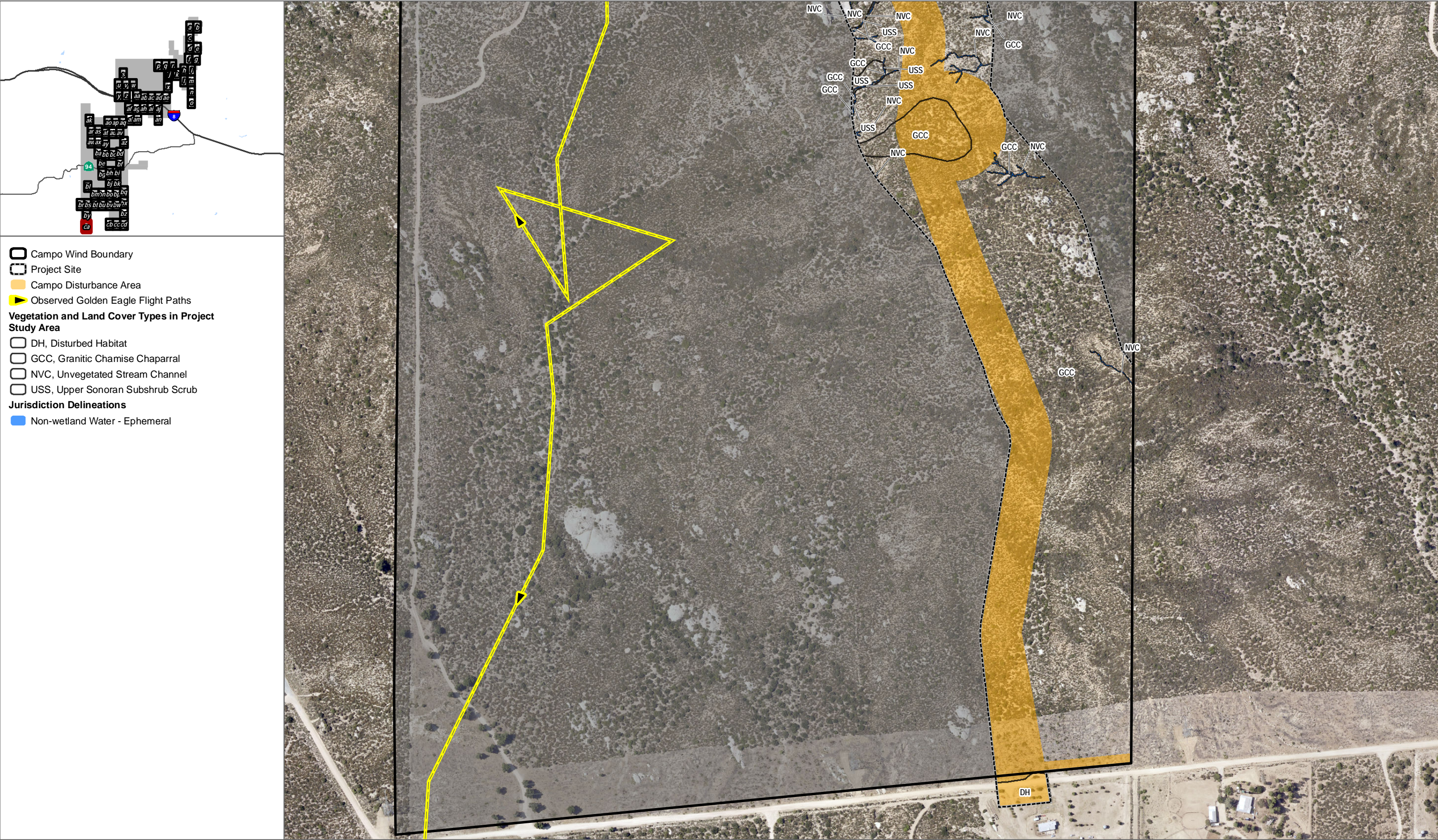
Impacts to Vegetation Communities and Landcovers

Campo Wind with Boulder Brush Facilities Biological Technical Report

**DUDEK**

0 200 400 Feet





SOURCE: Source: SANGIS 2017

**FIGURE 14ca**  
Impacts to Vegetation Communities and Landcovers  
Campo Wind with Boulder Brush Facilities Biological Technical Report





SOURCE: Source: SANGIS 2017





SOURCE: Source: SANGIS 2017

**DUDEK**

0 200 400 Feet

**FIGURE 14cc**

Impacts to Vegetation Communities and Landcovers

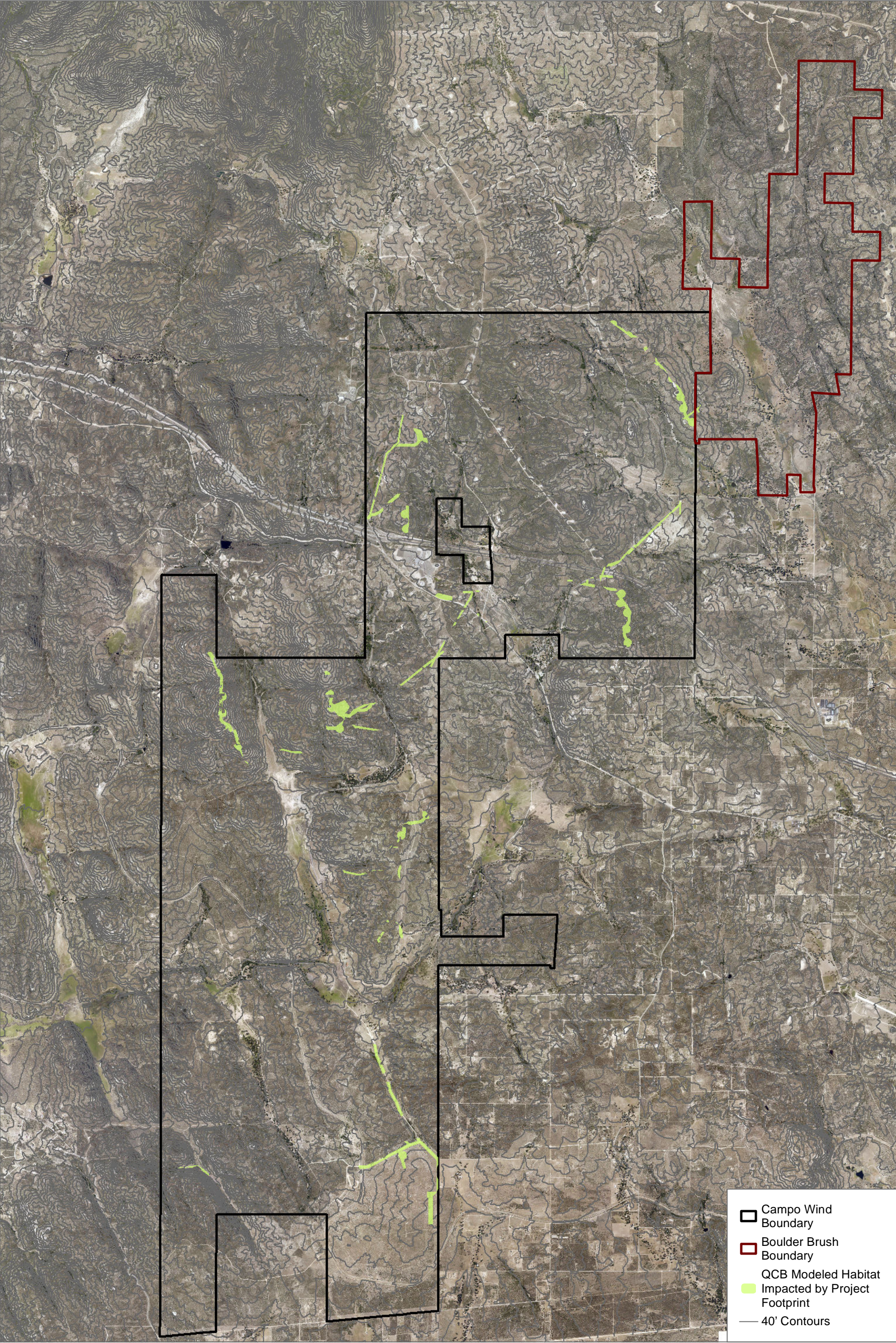
Campo Wind with Boulder Brush Facilities Biological Technical Report





SOURCE: Source: SANGIS 2017

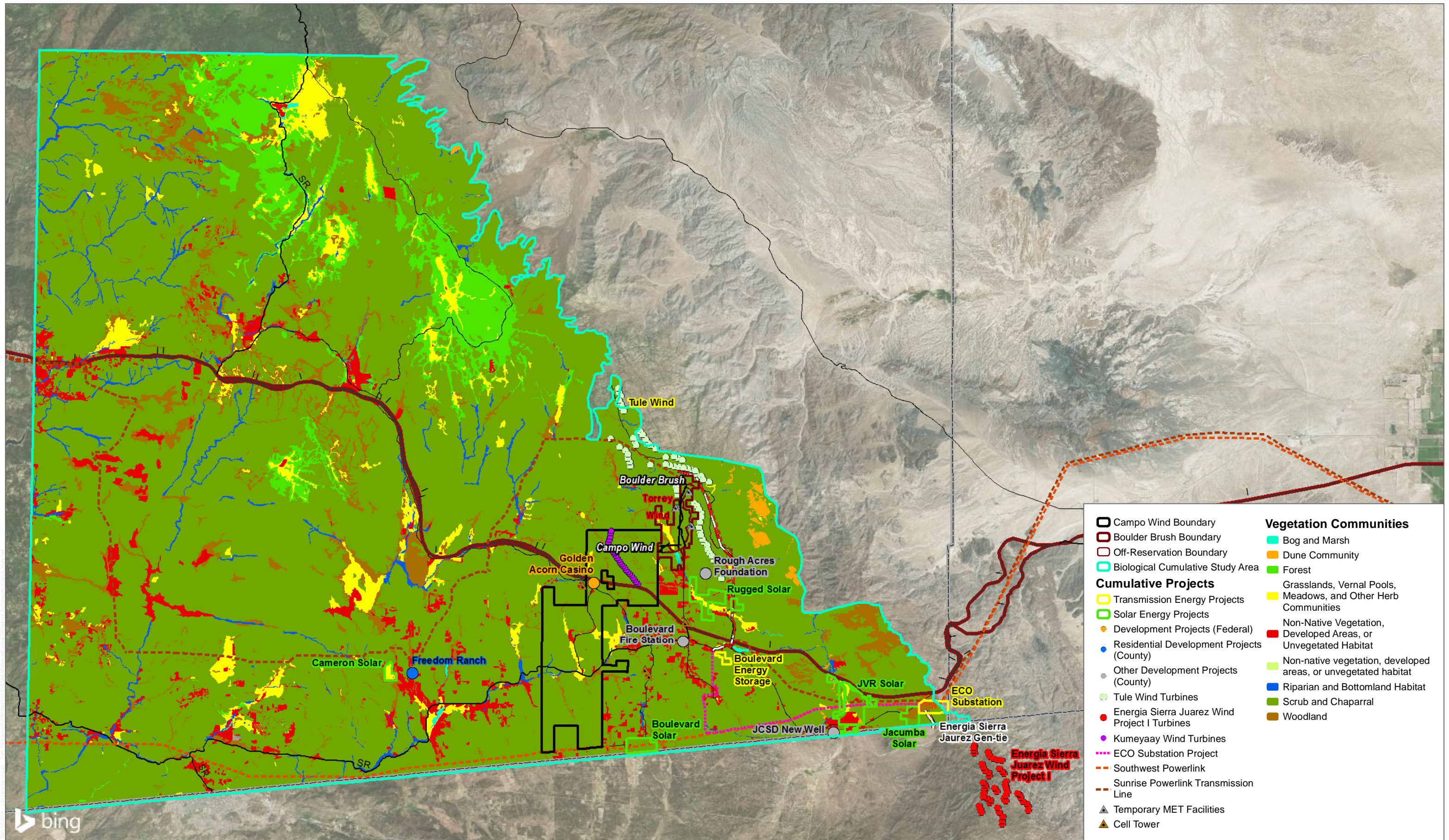




SOURCE: SANGIS 2017

**FIGURE 15**  
Impacts to Potentially Occupied Quino Checkerspot Butterfly Habitat  
Campo Wind with Boulder Brush Facilities Biological Technical Report





SOURCE: BING 2018; County of San Diego

FIGURE 16